

FLOW CONTROLLER

Model OCU

The KYTOLA® flow controller model OCU is designed for monitoring and controlling the flow rates of individual lubrication points in paper machine circulation lubrication systems.

Flow rates are measured using oval gear meters. If any deviation between the flow rate and the set point occurs, the flow control valve automatically adjusts the flow rate to the set (desired) value.

FEATURES

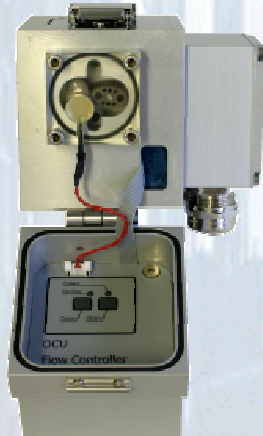
- Single point model or 4-point model
- Optional temperature measurement
- Communication with upper level system via Modbus (RTU) protocol
- Individual service valves

TYPICAL APPLICATIONS

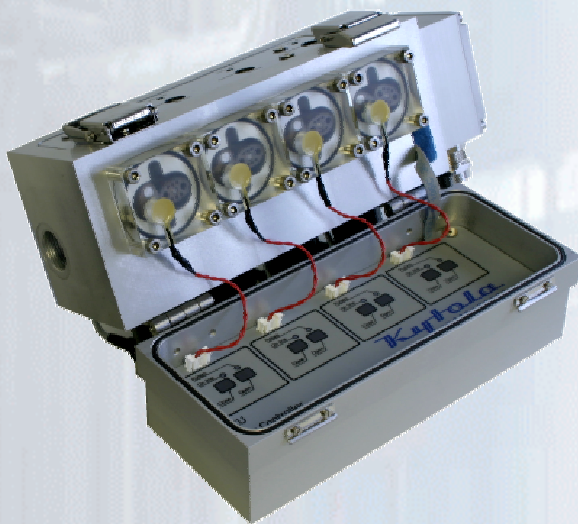
- Control of lubrication oil
- Control of industrial oil flow
- Process control

OPTIONS

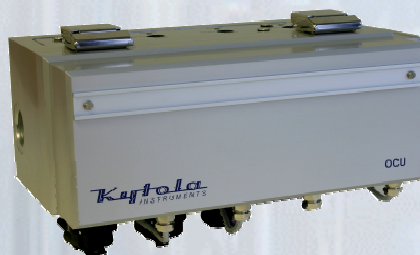
- BSP or NPT -connections
- Wall mounting stand



OCU single
point model



OCU 4-point
model



OCU closed



Technical data

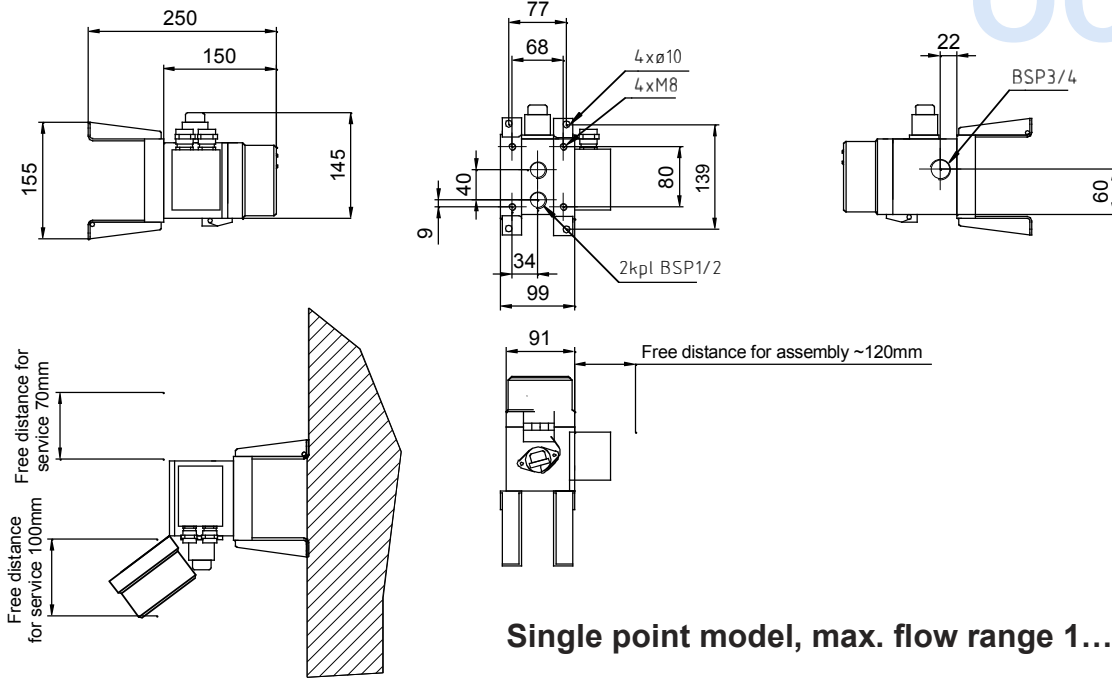
Max. flow ranges	1 l/min; 2,5 l/min; 6 l/min; 10 l/min; 20 l/min or 30 l/min oil
Max. pressure	10 bar
Max. temperature	+80°C
Protection class	IP67
Oil purity class	16/13 (ISO 4406)

Code key, single point model

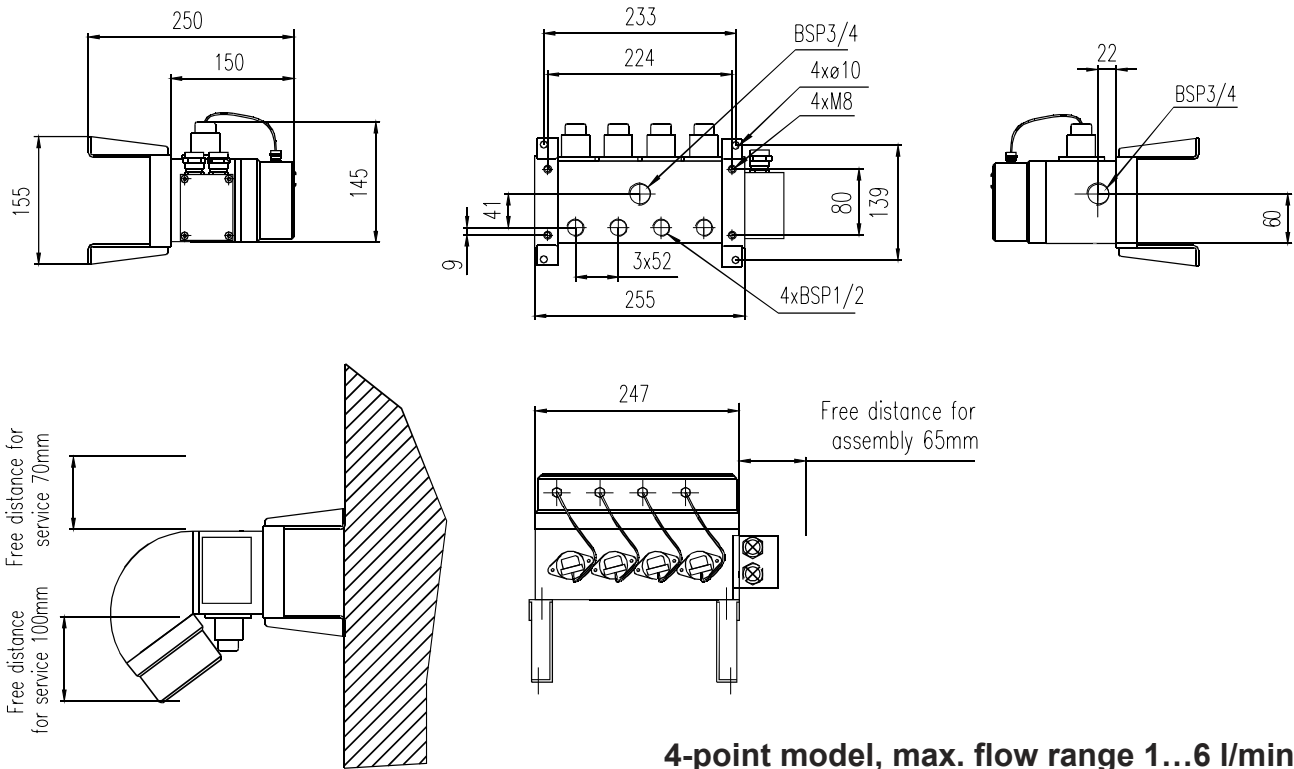
OCU -			
			Connections
			BSP - threads
		N	NPT - threads
			Connection type
		B	Panel mount
		S	Side connections
		W	With wall stands
			Flow range
	1		0,1 - 1 l/min
	2.5		0,25 - 2,5 l/min
	6		0,6 - 6 l/min
	10		1 - 10 l/min
	20		2 - 20 l/min
	30		3 - 30 l/min

Code key, 4-point model

OCU4 -	XXXX		
			Options
		S	With wall stands
			Connections
			BSP - threads
		N	NPT - threads
			Flow range / measuring point
	A		0,1 - 1 l/min automatic
	B		0,25 - 2,5 l/min automatic
	C		0,6 - 6 l/min automatic
	D		0,1 - 1 l/min manual
	E		0,25 - 2,5 l/min manual
	F		0,6 - 6 l/min manual
	X		Spare measuring point



Single point model, max. flow range 1...6 l/min



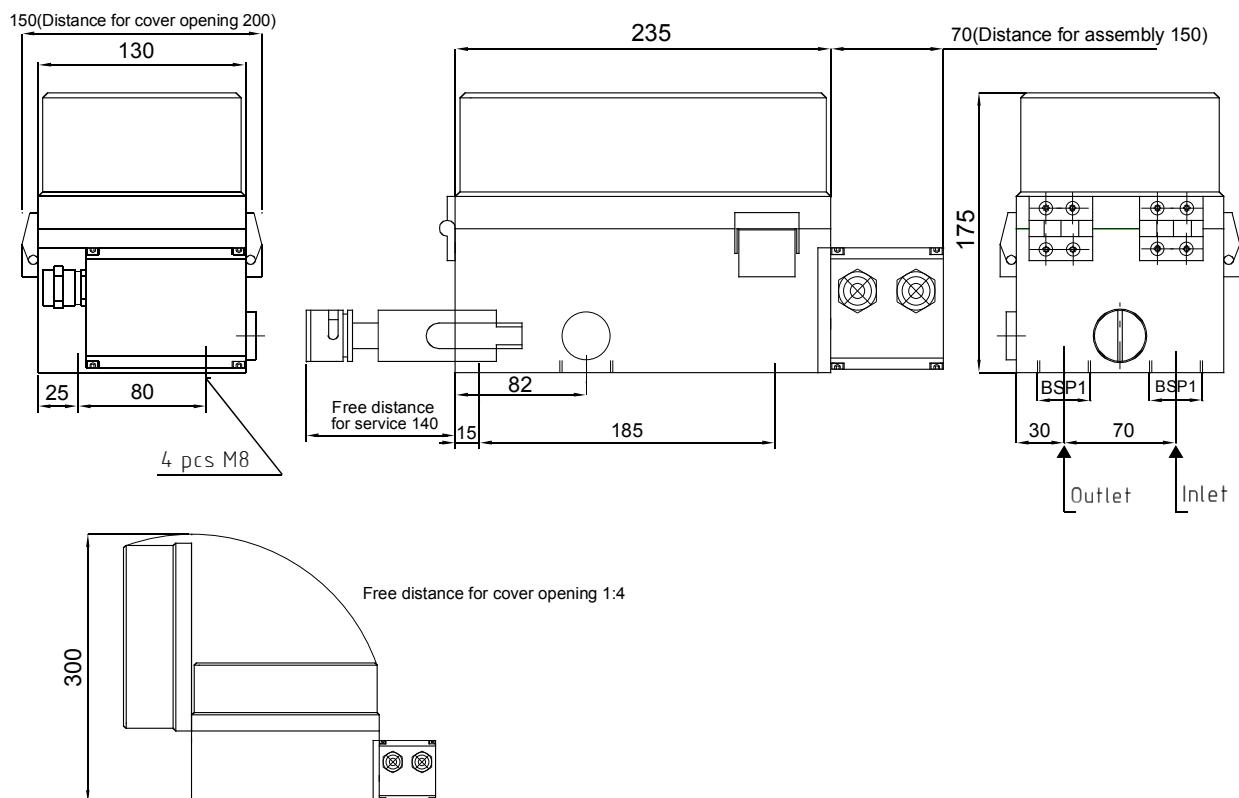
4-point model, max. flow range 1...6 l/min

MANUFACTURER

Kytola
INSTRUMENTS

KYTOLA OY • Olli Kytolan tie 1
P.O. Box 5 • FI-40951 MUURAME • FINLAND
Phone +358 207 7906 90 • Fax +358 14 631 419
E-mail sales@kytola.com • www.kytola.com

LOCAL
REPRESENTATIVE



Single point model, max. flow range 10...30 l/min